

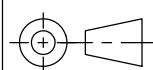
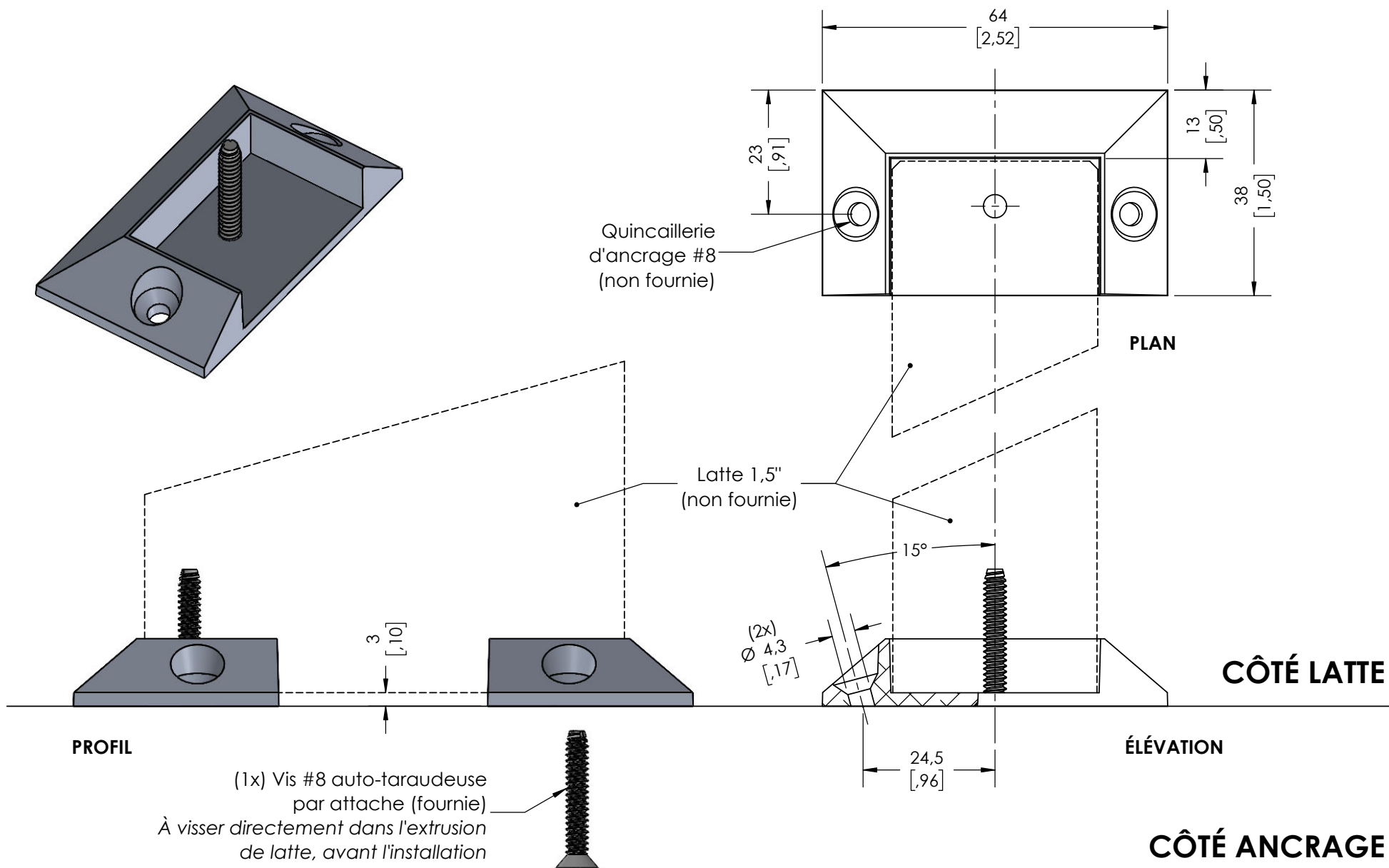
REMARQUE :

- Assurez-vous de retirer les embouts (le cas échéant) avant d'installer les attaches à chaque extrémité de la latte.
- Fixez l'attache BC à la latte avant de l'installer sur le mur, le sol ou le plafond.

IMPORTANT : Vérifiez toujours les réglementations locales en matière de construction avant d'installer les lattes.

ATTACHE BC

LATTE 1,5"

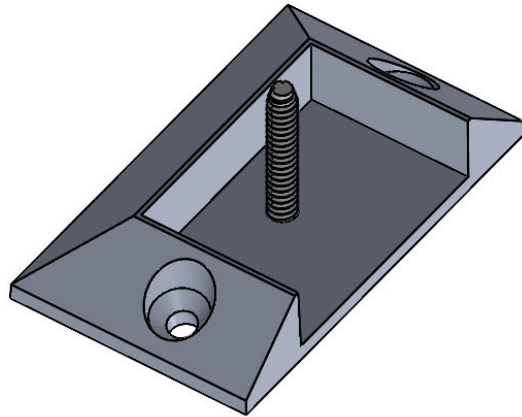


NOTE:

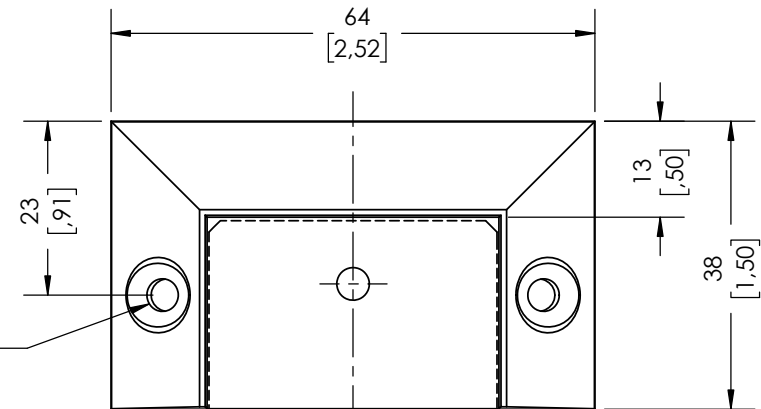
- Make sure to remove end cap (if applicable) prior to install brackets to each batten end.
- Fasten the bracket to the batten before installing on wall/ground/ceiling.

IMPORTANT: Always check local building regulations before installing battens.

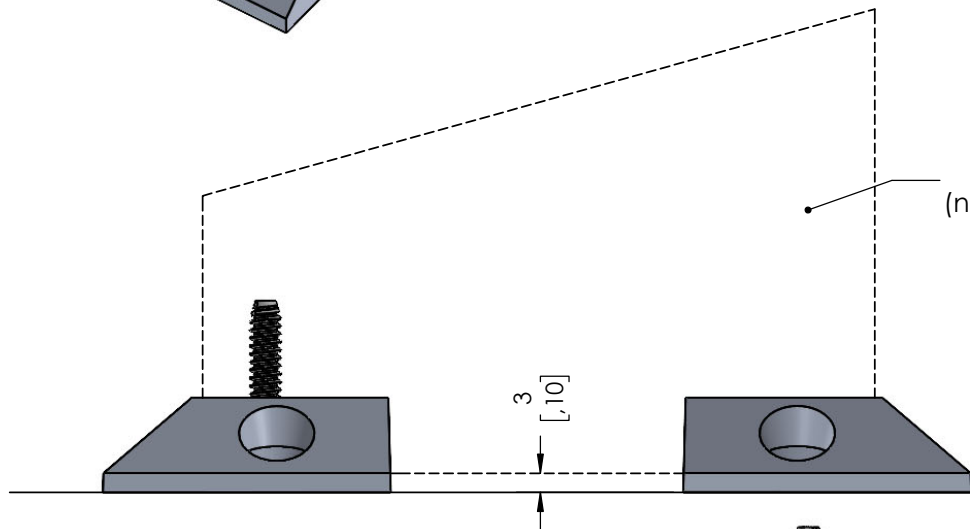
BC BRACKET 1.5" BATTENS



#8 Anchoring hardware
(not included)

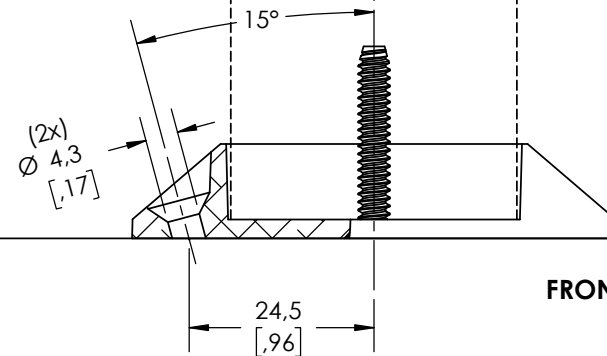


TOP VIEW



SIDE VIEW

1.5" Batten
(not included)



FRONT VIEW

BATTEN SIDE

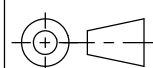
(1x) #8 self-taping screw
per bracket (included)
Fasten directly in the batten extrusion,
before installation

ANCHORING SIDE



Aluminium architectural
Architectural Aluminum

Projet/Project



Pce/Part #

AEASP15

Description

"BC" TYPE BRACKET - 1.5" BATTENS

Par/By

M.S.

Date

2025-05-21

Fini/Finish

CHARCOAL

Unites/Units

mm [po/in]

Ech./Scale

1:1

CE Dessin est la propriété de MAIBEC. Toute reproduction, en tout ou en partie, doit être autorisée par les personnes mentionnées ci-dessus. MAIBEC se réserve le droit de modifier les éléments de ce dessin technique / fiche technique sans préavis.
THIS DRAWING IS THE PROPERTY OF MAIBEC. ALL REPRODUCTIONS, IN FULL OR IN PART, MUST BE AUTHORIZED BY THE ABOVE MENTIONED. MAIBEC RESERVES THE RIGHT TO MODIFY THE ELEMENTS ON THIS TECHNICAL DRAWING / DATA SHEET WITHOUT PRIOR NOTICE.