



SUBMITTAL
PACKAGE

Assembled Battens

Aluminum

From Nature to Architecture



INTRODUCTION

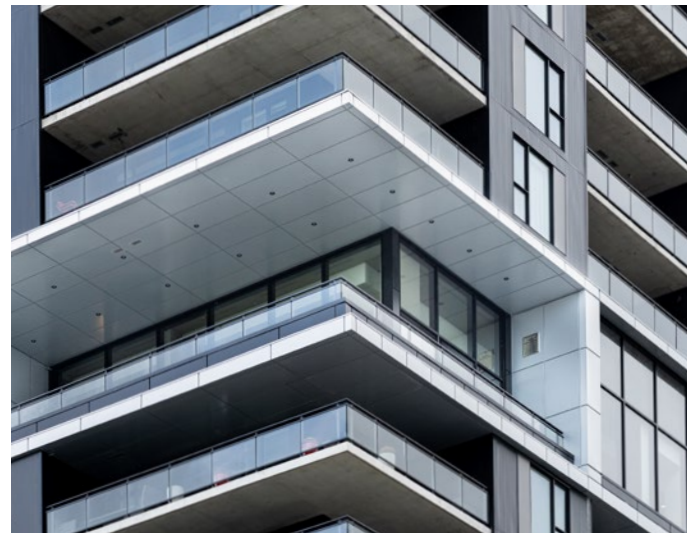
Welcome to our Submittal Package, designed to provide a simple, fast, and efficient experience when selecting your exterior cladding. Whether you're a contractor, architect, or distributor, you'll find all the information you need here to make an informed decision about our products.

Technical data sheets, installation guides, typical details, specifications, maintenance tips, and warranties — everything is gathered in one place to save you time and give you peace of mind at every stage of your project.

Our commitment is clear: to offer you durable, visually appealing, and easy-to-install solutions, supported by attentive customer service and tools designed to simplify your work.

*"Quality is never an accident.
It is always the result of intelligent effort."*

— John Ruskin



Technical documentation

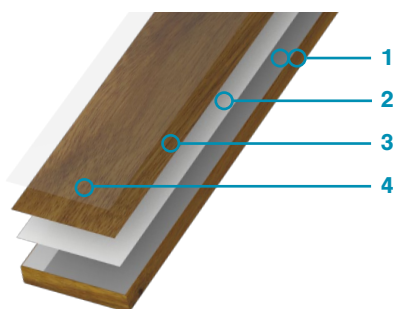
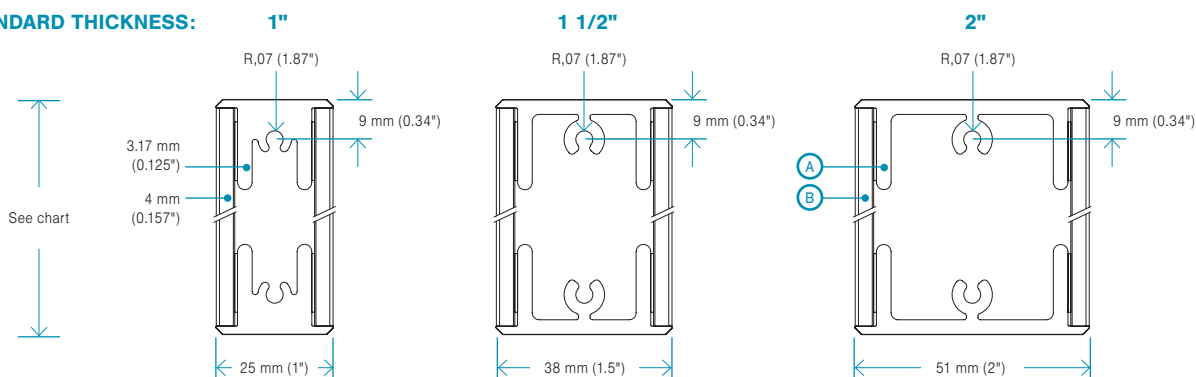
TECHNICAL DATA SHEET

Aluminum siding – MAA Series

Architectural battens



STANDARD THICKNESS:



1. ALUMINUM

- A) 6063-T5 Aluminum extrusion 0.125" (3.17 mm) thick, recognized as the industry's first choice for its exceptional durability.
- B) Aluminum lattice composite panel (ALCP) 0.157" (4 mm) thick. Can be cut to the desired width and material 2.5x lighter than aluminum.

2. PRIMER COAT

Specially formulated primer coat ± 1.2 mils (30.48 μm) thick assures optimal adhesion between aluminum and ink.

3. HD PRINTING

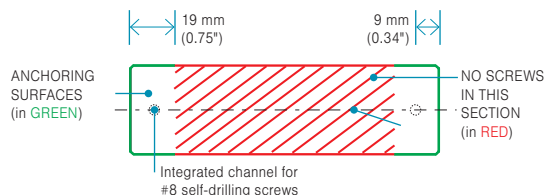
High-definition digital inkjet print ± 1 mil (25.4 μm) thick of a wide range of textures with outstanding color variations.

4. CLEAR COAT

A protective clear coat ± 1.2 mils (30.48 μm) thick is applied to provide long-term protection against fading.

MOUNTING DETAILS

When attaching to walls, floors or ceilings, **ALWAYS attach the batten through the extrusions on each side** (shown in GREEN below). **Warning: the batten must never be fixed in the central section** (in RED below).



WIDTH		BATTEN THICKNESS & WEIGHT CHART (PER LI. FT.)			
NOMINAL	ACTUAL SIZE	1" (25 mm)	1 1/2" (38 mm)	2" (51 mm)	
2" (51 mm)	2" (51 mm)	1.14 lb / 0.52 kg	1.25 lb / 0.56 kg	1.41 lb / 0.64 kg	
3" (76 mm)	2.812" (71 mm)	1.29 lb / 0.59 kg	1.40 lb / 0.64 kg	1.57 lb / 0.71 kg	
4" (102 mm)	3.812" (97 mm)	1.42 lb / 0.64 kg	1.52 lb / 0.69 kg	1.69 lb / 0.77 kg	
5" (127 mm)	4.812" (122 mm)	1.57 lb / 0.71 kg	1.68 lb / 0.76 kg	1.85 lb / 0.84 kg	
6" (152 mm)	5.812" (148 mm)	1.76 lb / 0.80 kg	1.87 lb / 0.85 kg	2.03 lb / 0.92 kg	
8" (203 mm)	7.812" (198 mm)	2.07 lb / 0.94 kg	2.18 lb / 0.99 kg	2.34 lb / 1.06 kg	

General Specifications

MODEL

See chart

LENGTH*

16 ft | 4.8 m - 12 ft | 3.6 m - 8 ft | 2.4 m

PRODUCT

Aluminum Battens

MATERIAL

6063-T5 aluminum

WEIGHT

See chart

TESTS AND CERTIFICATIONS*

- CAN/ULC S102 - Fire Resistance
- ASTM E84 - Fire Resistance
- ASTM D3359 - Adhesion testing
- ASTM D6578 - Graffiti Resistance
- ASTM D1037 - Screw pull out strength

* Nominal lengths. Actual lengths : 16'-0" \pm 0.1875" (4,8m \pm 4,7mm) / 12'-0" \pm 0.1875" (3,6m \pm 4,7mm) / 8'-0" \pm 0.1875" (2,4m \pm 4,7mm).
IMPORTANT: Always check local building regulations before installing Maibec battens.

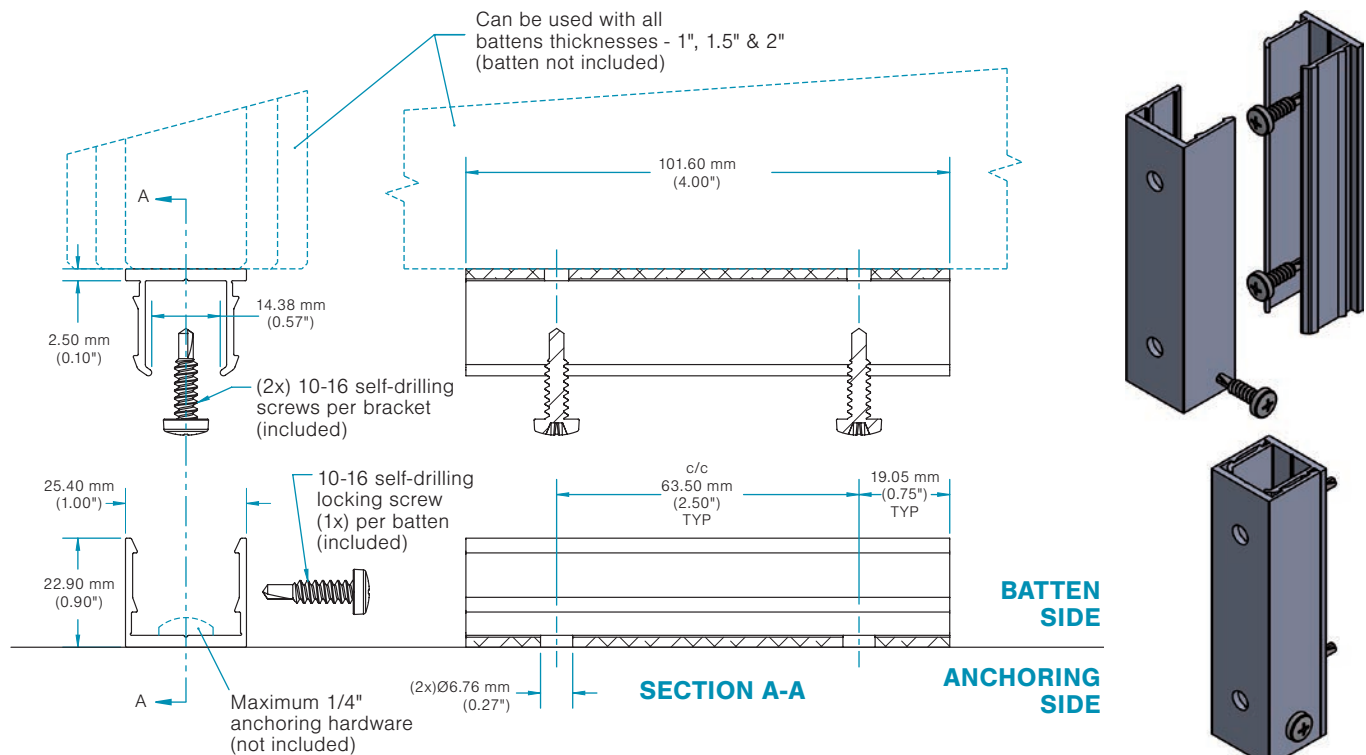
* VISIT MAIBEC.COM FOR FULL DETAILS

TECHNICAL DATA SHEET – INSTALLATION

Aluminum batten accessories
MAA Serie

SN Bracket – 1 in, 1 ½ in and 2 in Batten

INSTALLATION : VERTICAL or CEILING ONLY



General Specifications

MODEL

SN Bracket - 1 in, 1 ½ in and 2 in Batten

FINISH

RAL 7022 Matte

MATERIAL

6063-T6 aluminum

WEIGHT

0.12 lb | 0.057 kg

RECOMMENDATION

Recommended Span distance mounting for anchor screws (by others) and/or Maibec aluminum Brackets is 8'-0" (2438 mm) c/c*.

* Calculated for 1" (25 mm), 1.5" (38 mm) and 2" (50 mm) battens thickness from 2" (50 mm) to 8" (203 mm) width. For other dimensions, please contact customer services.

NOTE

The first screw/bracket must be installed a maximum of 12" (305 mm) from each batten end.

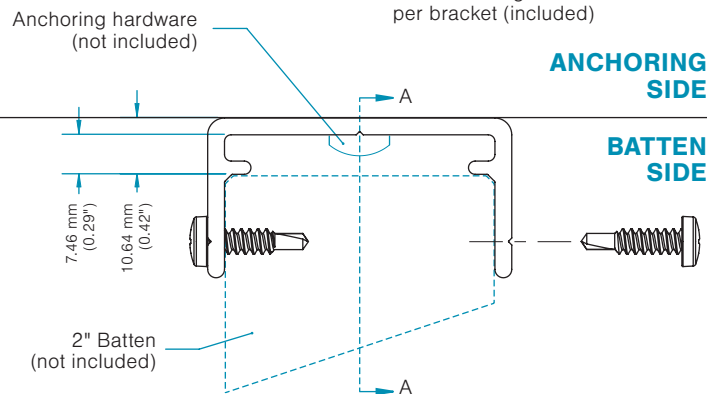
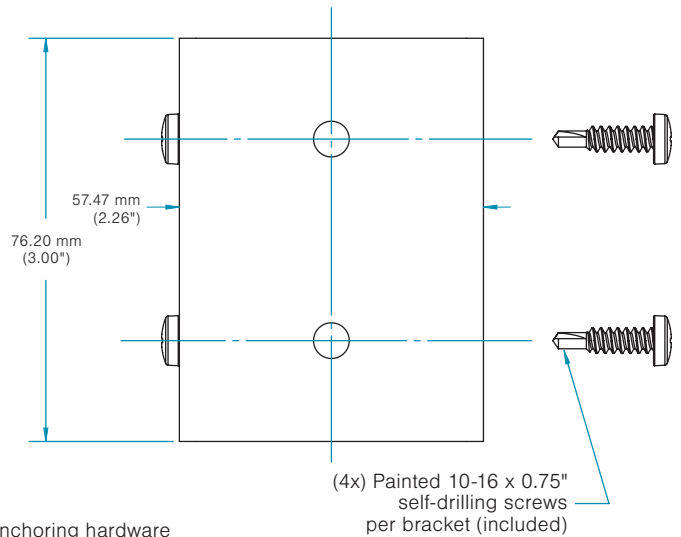
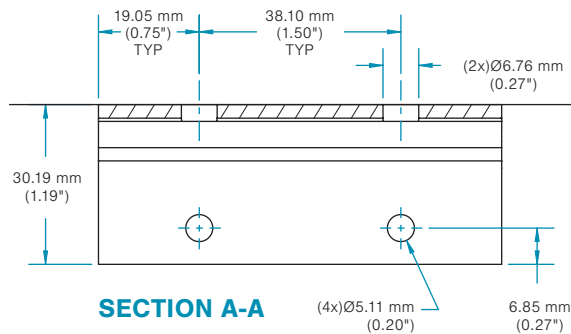
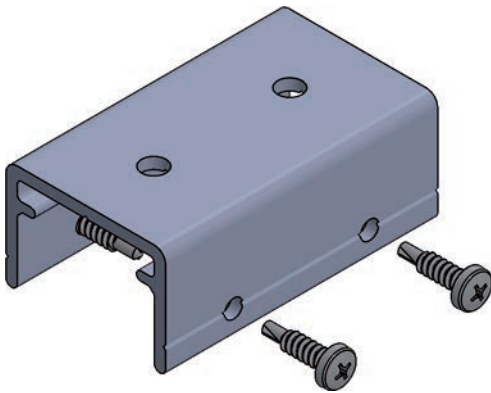
IMPORTANT

Always check local building regulations before installing Maibec aluminum battens.

TECHNICAL DATA SHEET – INSTALLATION

Aluminum batten accessories
MAA Serie

CC Bracket – 2 in Batten



General Specifications

MODEL

CC Bracket - 2 in Batten

MATERIAL

6063-T6 aluminum

FINISH

RAL 7022 Matte

WEIGHT

0.17 lb | 0.077 kg

RECOMMENDATION

Recommended Span distance mounting for anchor screws (by others) and/or Maibec aluminum Brackets is 8'-0" (2438 mm) c/c*.

* Calculated for 1" (25 mm), 1.5" (38 mm) and 2" (50 mm) battens thickness from 2" (50 mm) to 8" (203 mm) width. For other dimensions, please contact customer services.

NOTE

The first screw/bracket must be installed a maximum of 12" (305 mm) from each batten end.

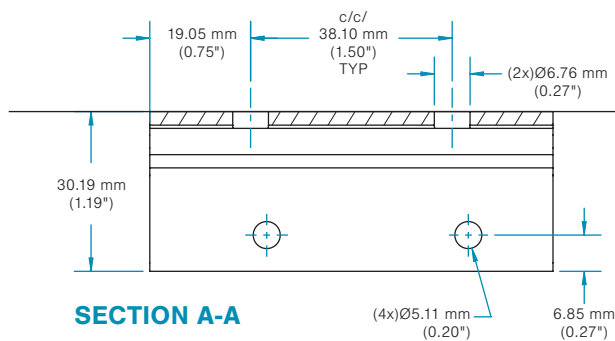
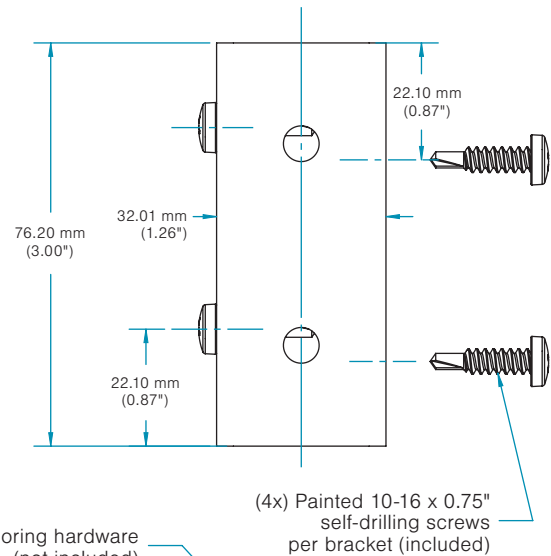
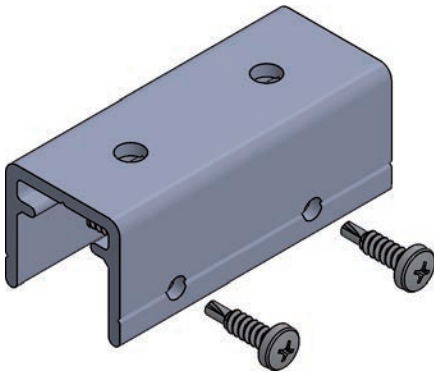
IMPORTANT

Always check local building regulations before installing Maibec aluminum battens.

TECHNICAL DATA SHEET – INSTALLATION

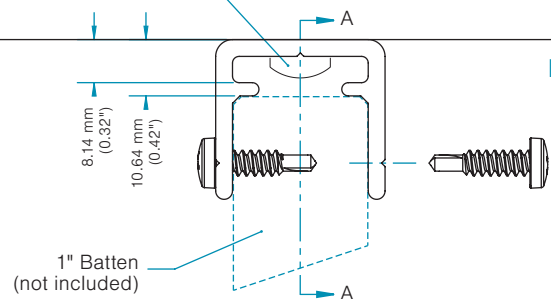
Aluminum batten accessories
MAA Serie

CC Bracket – 1 in Batten



Anchoring hardware (not included)

ANCHORING SIDE



General Specifications

MODEL

CC Bracket - 1 in Batten

MATERIAL

6063-T6 aluminum

FINISH

RAL 7022 Matte

WEIGHT

0.11 lb | 0.049 kg

RECOMMENDATION

Recommended Span distance mounting for anchor screws (by others) and/or Maibec aluminum Brackets is 8'-0" (2438 mm) c/c*.

* Calculated for 1" (25 mm), 1.5" (38 mm) and 2" (50 mm) battens thickness from 2" (50 mm) to 8" (203 mm) width. For other dimensions, please contact customer services.

NOTE

The first screw/bracket must be installed a maximum of 12" (305 mm) from each batten end.

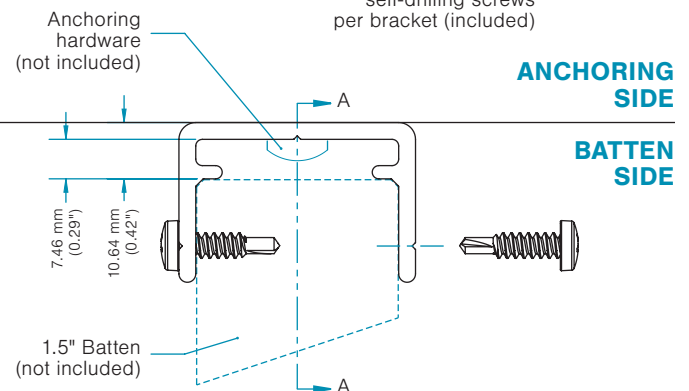
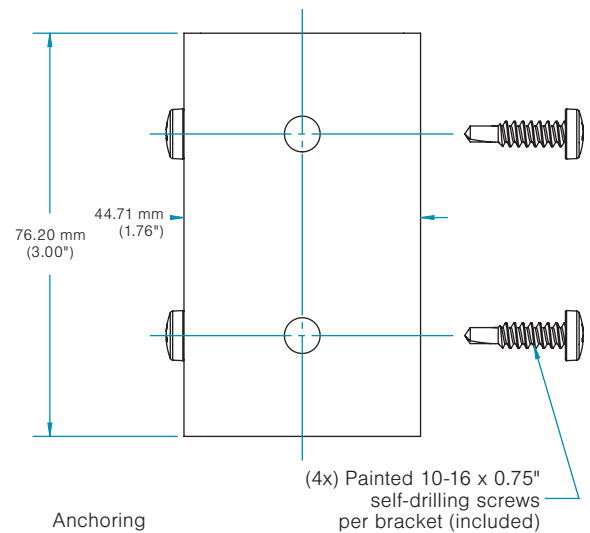
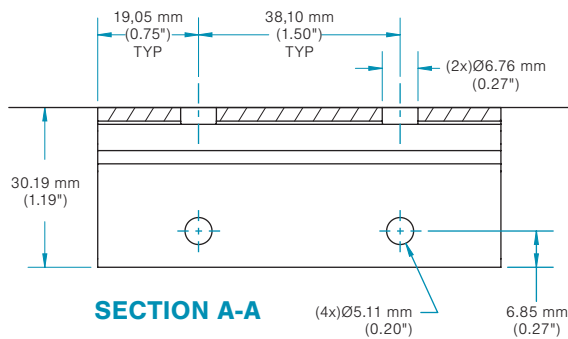
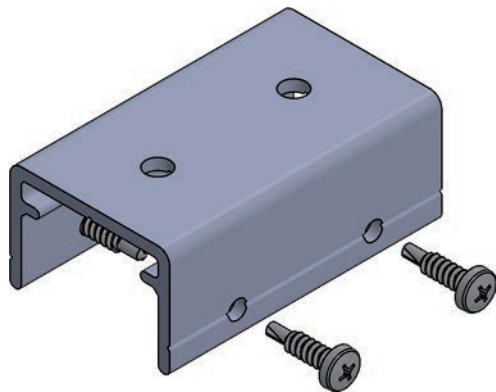
IMPORTANT

Always check local building regulations before installing Maibec aluminum battens.

TECHNICAL DATA SHEET – INSTALLATION

Aluminum batten accessories
MAA Serie

CC Bracket – 1.5 in Batten



General Specifications

MODEL

CC Bracket - 1.5 in Batten

MATERIAL

6063-T6 aluminum

FINISH

RAL 7022 Matte

WEIGHT

0.12 lb | 0.055 kg

RECOMMENDATION

Recommended Span distance mounting for anchor screws (by others) and/or Maibec aluminum Brackets is 8'-0" (2438 mm) c/c*.

* Calculated for 1" (25 mm), 1.5" (38 mm) and 2" (50 mm) battens thickness from 2" (50 mm) to 8" (203 mm) width. For other dimensions, please contact customer services.

NOTE

The first screw/bracket must be installed a maximum of 12" (305 mm) from each batten end.

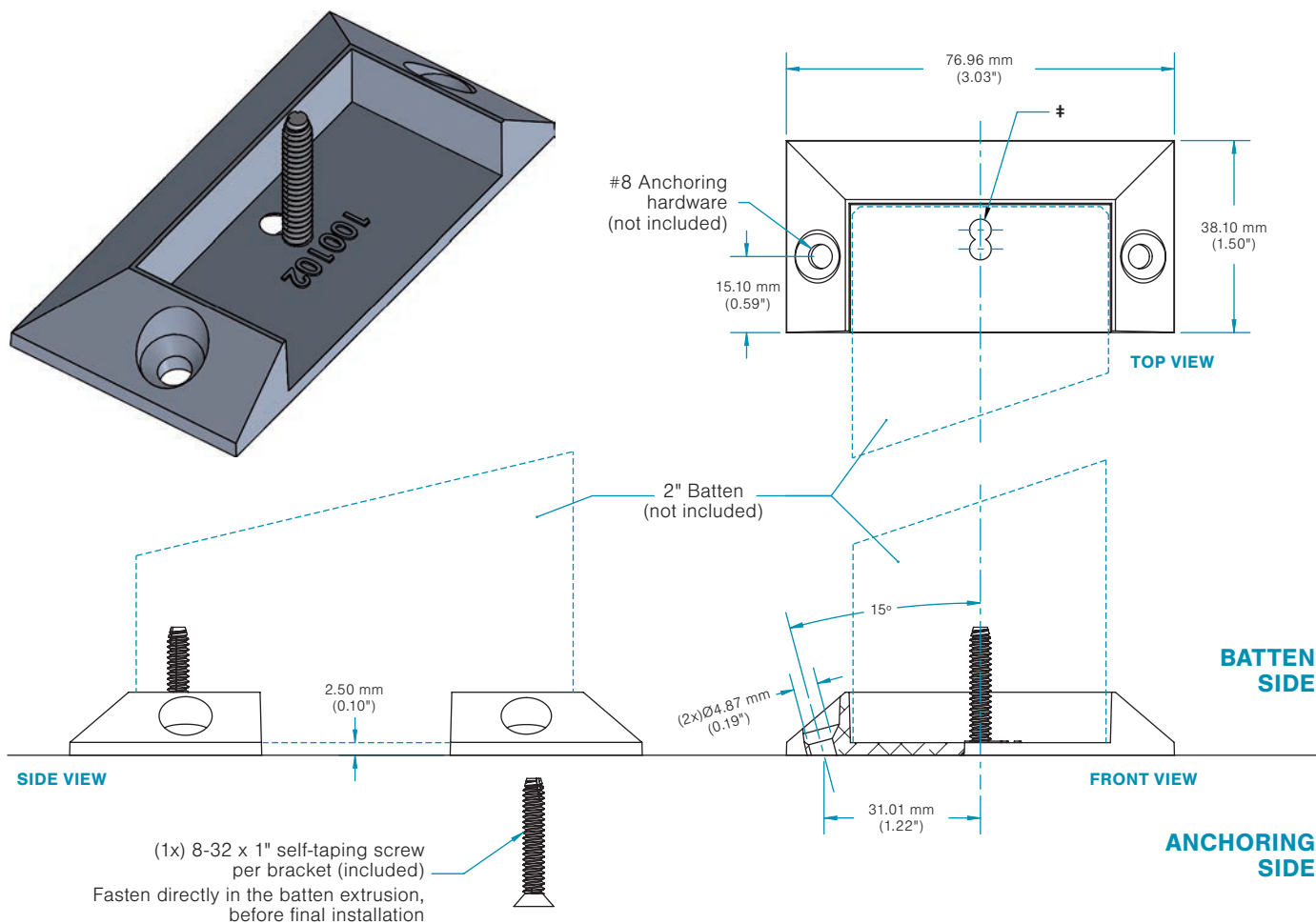
IMPORTANT

Always check local building regulations before installing Maibec aluminum battens.

TECHNICAL DATA SHEET – INSTALLATION

Aluminum batten accessories
MAA Serie

BC Bracket – 2 in Batten



General Specifications

MODEL

BC Bracket - 2 in Batten

MATERIAL

A380 aluminum

FINISH

RAL 7022 Matte

WEIGHT

Kit: 0.14lb | 0.066kg

NOTE

- 1) Make sure to remove end cap (if applicable) prior to install brackets to each batten end.
- 2) Fasten the bracket to the batten before installing on wall/ground/ceiling.

IMPORTANT

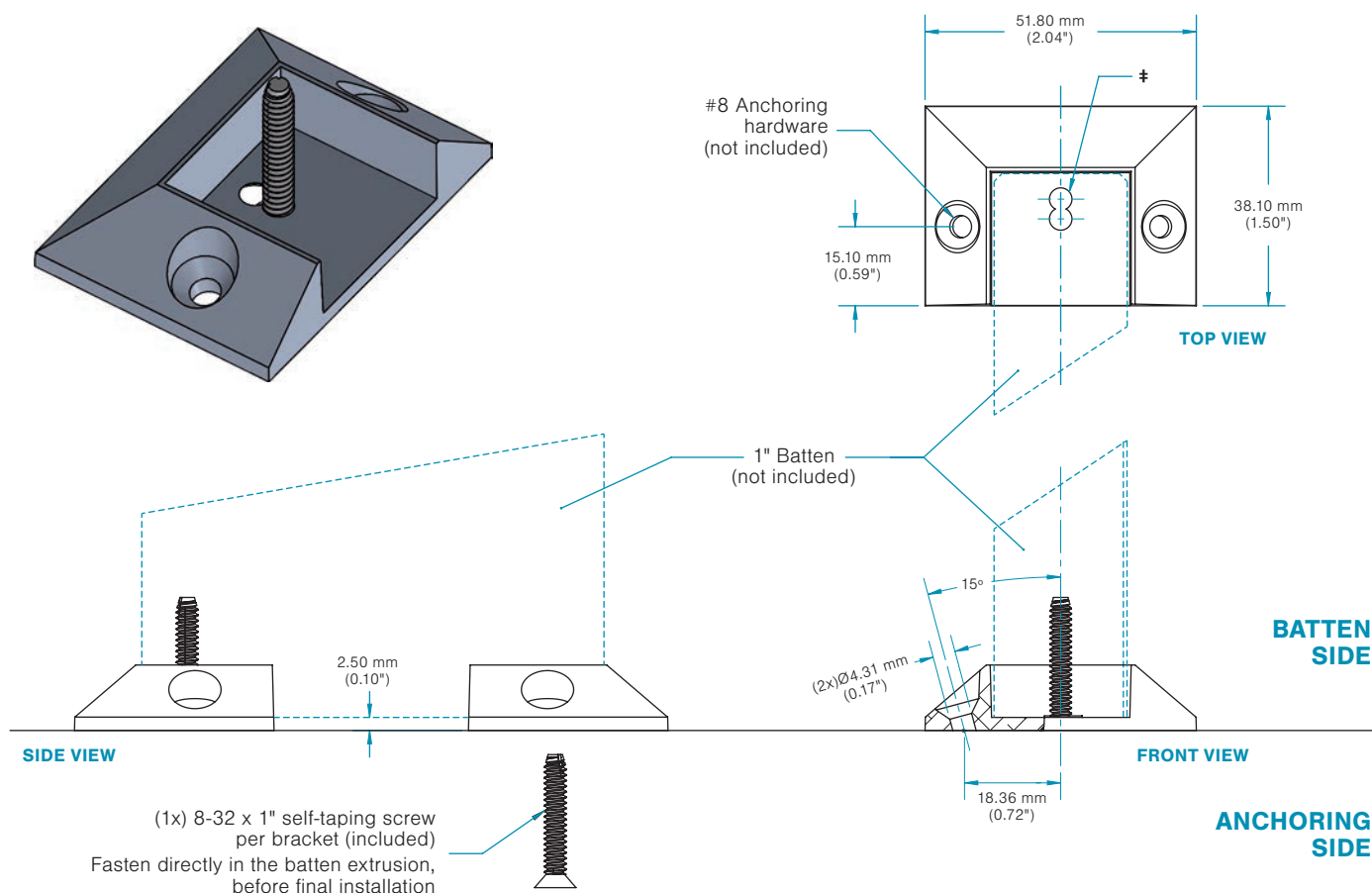
Always check local building regulations before installing Maibec aluminum battens.

* Make sure to use proper hole when fastening BC brackets to the batten. There should be no space between the two parts.

TECHNICAL DATA SHEET – INSTALLATION

Aluminum batten accessories
MAA Serie

BC Bracket – 1 in Batten



General Specifications

MODEL

BC Bracket - 1 in Batten

MATERIAL

A380 aluminum

FINISH

RAL 7022 Matte

WEIGHT

Kit: 0.10 lb | 0.046 kg

NOTE

- 1) Make sure to remove end cap (if applicable) prior to install brackets to each batten end.
- 2) Fasten the bracket to the batten before installing on wall/ground/ceiling.

IMPORTANT

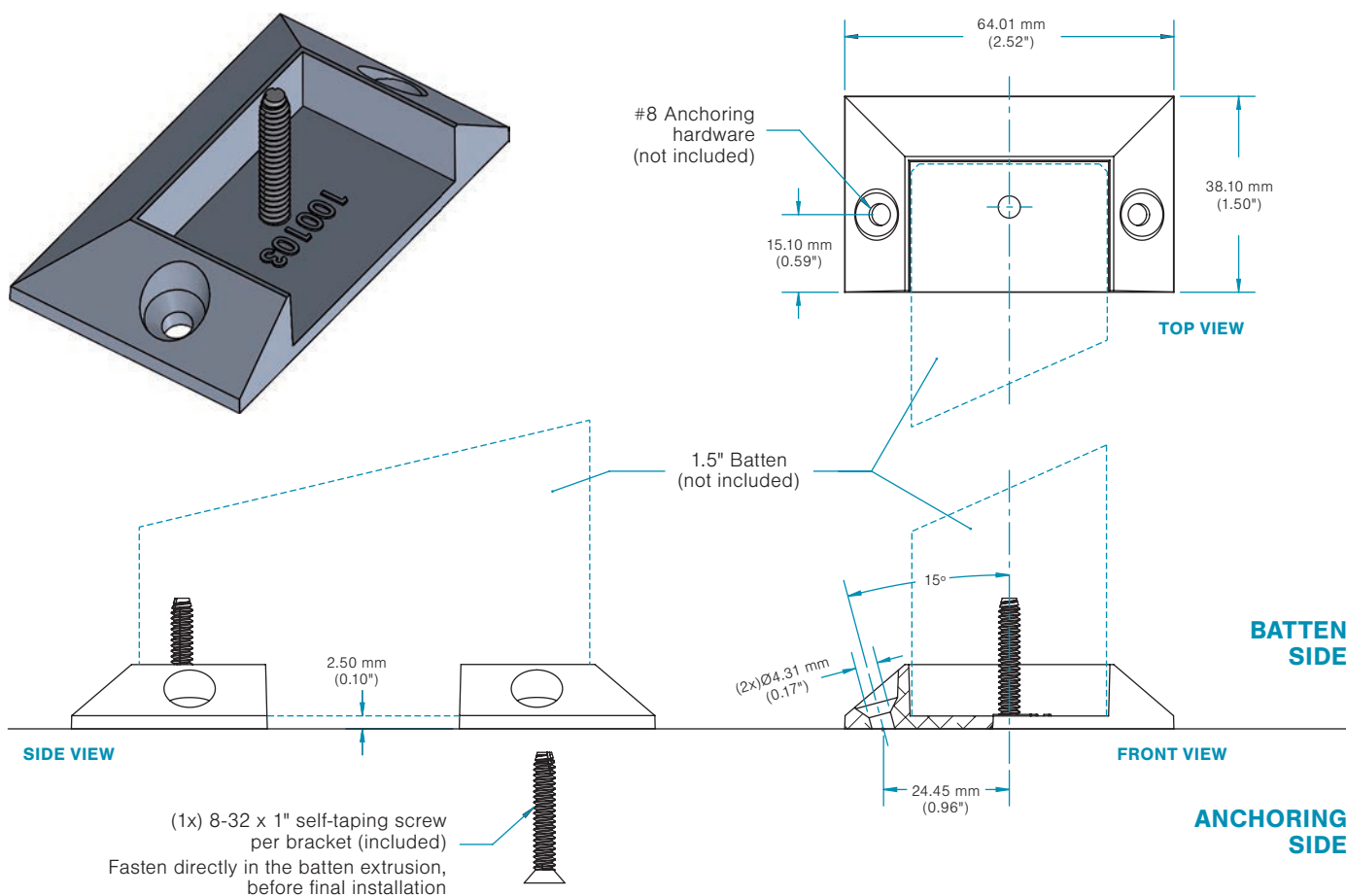
Always check local building regulations before installing Maibec aluminum battens.

* Make sure to use proper hole when fastening BC brackets to the batten. There should be no space between the two parts.

TECHNICAL DATA SHEET – INSTALLATION

Aluminum batten accessories
MAA Serie

BC Bracket – 1.5 in Batten



General Specifications

MODEL

BC Bracket - 1.5 in Batten

MATERIAL

A380 aluminum

FINISH

RAL 7022 Matte

WEIGHT

Kit: 0.12 lb | 0.056 kg

NOTE

- 1) Make sure to remove end cap (if applicable) prior to install brackets to each batten end.
- 2) Fasten the bracket to the batten before installing on wall/ground/ceiling.

IMPORTANT

Always check local building regulations before installing Maibec aluminum battens.

Specifications

WORD Document

To access the document in Word format, click the link below and download from our website:

[074253_Maibec_ALU_BAT_Architect_Specifications_EN-1](#)

SPECIFIER NOTE: The purpose of this guide specification is to assist the specifier in correctly specifying aluminum siding with a digitally printed finish and their installation. The specifier needs to edit the guide specifications to fit the needs of specific projects. Contact MAIBEC to assist in appropriate product selections and for detailing assistance. Red text in brackets indicates a selection needs to be made.



Architectural Aluminum

SECTION 07 42 53 METAL BATTENS AND SLAT ASSEMBLIES

PART 1 - GENERAL

1.1 SECTION INCLUDES **[EDIT AS REQUIRED]**

- A. Aluminum digitally printed architectural battens for exterior and interior horizontal and vertical applications, with primer coat, digitally printed finish and UV Clear Coat.
- B. Aluminum batten accessories with AAMA 2604 solid color paint.
- C. Accessory products including
 - 1. **[BC Brackets]**
 - 2. **[CC Brackets]**
 - 3. **[SN Brackets]**
 - 4. **[End cap]**

1.2 RELATED SECTIONS

- A. Section 01 74 21 - Construction/Demolition Waste Management and Disposal
- B. Section 05 41 00 - Structural Metal Stud Framing
- C. Section 06 10 00 - Rough Carpentry
- D. Section 06 16 00 - Sheathing
- E. Section 07 20 00 - Thermal Protection
- F. Section 07 25 00 - Weather Barriers
- G. Section 07 60 00 - Flashing and Sheet Metal

1.3 REFERENCES (The date of the standard is that in effect as of the date of receipt of bids for the project.)

- A. American Society for Testing and Materials (ASTM)
 - 1. ASTM B2794 – Resistance of Organic Coating to the Effects of Rapid Deformation - Impact Test
 - 2. ASTM D523 – Standard Test Method for Specular Gloss
 - 3. ASTM D1037 Section 14 – Nail Withdrawal Test Methods for Evaluating the Basic Properties of Wood-Base Fiber and Particle Panel Materials
 - 4. ASTM D2244 – Standard Practice for Calculation of Color Tolerances and Color Differences from Instrumentally Measured Color Coordinates
 - 5. ASTM D3359-B – Measuring Adhesion by Tape Test
 - 6. ASTM D6578 – Determination of Graffiti Resistance
 - 7. ASTM E84 – Standard Test Method for Surface Burning Characteristics of Building Materials
 - 8. ASTM G155 – Operating Xenon Arc Light Apparatus for Exposure of Non-Metallic Materials
- B. American Architectural Manufacturers Association (AAMA) (FGIA)

1. AAMA 2604 – Voluntary Specification, Performance Requirements and Test Procedures for High Performance Organic Coatings on Aluminum Extrusions and Panels.

1.4 PERFORMANCE REQUIREMENTS

- A. Design batten system to span continuously over structural supports with fastening to structural supports to sustain factored loads in accordance with authority having jurisdiction.
- B. Include expansion joints to accommodate movement between batten system and building structure, caused by structural movements, without permanent distortion, damage to infills, racking of joints, breakage of seals.
- C. Delegated Design: Engage a qualified professional engineer with experience using performance requirements and design criteria indicated.
- D. Performance: Provide battens capable of withstanding the effects of loads and stresses from wind and normal thermal movement without evidencing permanent deformation; or permanent damage to fasteners and anchors.
- E. Wind Load: Uniform pressures (velocity pressures) indicated on project Drawings.

1.5 SUBMITTALS

- A. ACTION SUBMITTALS
 1. Product Data: For each type of product, include the following:
 - a. Technical data sheet
 - b. Installation Instructions
 - c. Standard drawing details and application
 - d. Aluminum material information
 - e. UV Fade Test Reports, by a 3rd Party Testing Agency
 - f. Batten and accessory dimension of components and profiles
 2. Digital Style and Color card showing the variation within selected style and color.
 3. Samples: Printed batten **OR** aluminum profile (or printed carton) to match digital Style and Color card
- B. INFORMATIONAL SUBMITTALS
 1. Product Test Reports: Submit for each type of batten, tests performed by a qualified testing agency.
 2. Sample warranty: For special finish
- C. CLOSEOUT SUBMITTALS
 1. Maintenance data: For each type of product, including related accessories. Include in Maintenance manuals.
 2. Warranty: Executed copy of the manufacturer's warranty.

1.6 QUALITY ASSURANCE

- A. Coordinate requirements with Section 01 45 00 "Quality Control".
- B. Mockups: Build mockups to verify selections made and to demonstrate aesthetic effects and to set quality standards for fabrication and installation.

1. Build mockup of typical batten assembly shown on Drawings including supports, attachments, and accessories
 2. Construct mock-up indicating relationship between battens, wall cladding, windows, and doors.
 3. Do not continue with work of this Section until Consultant has approved mock-up.
 4. Subject to compliance with requirements, approved mockups may become part of the completed Work if undisturbed at time of Substantial Completion.
- C. Pre-installation meeting
1. Conduct meeting at Project Site **[Insert location]**.
 2. Review to verify project drawings and requirements, manufacturer's installation instructions, and manufacturer's warranty requirements.
 3. Examine support conditions for compliance with requirements, including alignment between and attachment to structural members.
- D. Surface Burning Characteristics: In accordance with ASTM E84
1. Flame Spread Index (FSI): 20
 2. Smoke Developed Index (SDI): 120
- E. UV Fade Test: In accordance with ASTM G155
1. AATCC Grey Scale rating after 2000 hours: 4 (not noticeable)

1.7 DELIVERY, STORAGE, AND HANDLING

- A. Deliver materials and components in manufacturer's unopened cartons, properly labeled, and fully identified by product name and brand. Prevent any damage during unloading, storing, and installation.
- B. Store materials off ground and keep clean, dry, and free of dirt and debris. Store away from areas with falling objects or other construction activity that may occur or cause damage.
- C. Stack batten horizontally on platforms or pallets, covered with suitable weathertight and ventilated covering. Store battens to ensure dryness, with positive slope for drainage of water. Do not store battens in contact with other materials that might cause staining, denting, or other surface damage.

1.8 SITE CONDITIONS

- A. Field Measurements: Verify battens locations by field measurements before fabrication and indicate measurements on Shop Drawings. Coordinate fabrication schedule with construction progress to avoid delaying the Work.

1.9 WASTE MANAGEMENT AND DISPOSAL **[EDIT AS REQUIRED]**

- A. Separate waste materials for recycling in accordance with Section 01 74 21 "Waste Management and Disposal".
- B. Divert used metal cutoffs from landfill by disposal **[into the onsite metals recycling bin] [removed for disposal at the nearest metal recycling facility]**.
- C. Divert reusable materials for reuse at nearest used building materials facility.

1.10 WARRANTY [EDIT AS REQUIRED]

- A. Manufacturer warrants its aluminum siding and soffits are free of defects in material and workmanship, and when installed and maintained according to the manufacturer's instructions, the products are guaranteed against corrosion.
- B. Cladding system: 50 years limited warranty from date of Substantial Completion on Extruded Aluminum Profiles, non-prorated.

SPECIFIER NOTE: Select the appropriate Finish Warranty specific to this project.

- C. Finish Warranty
 - 1. **[Digital printed Finish]**: "3 layers" finish includes primer, high-definition inkjet printed layer and clear protective coating. Finish warranted to have following properties and period:
 - a. Resistance to Cracking and Crazing.
 - b. Color stability: No change in the color of the finish exceeding 5 (five) CIE Lab units. CIE illuminant D65, measured according to ASTM D2244 Section 6.3.
 - c. Gloss Retention: Finish will retain at least 30% of the initial gloss, measured according to ASTM D523.
 - d. Adhesion: The finish will not show any detachment inferior to class 4B.
 - e. 20 years warranty from date of Substantial Completion. Pending maintenance of the material and finishes as recommended by the manufacturer.
 - 2. **[Painted Finish]**: Finish is warranted to have the following properties and period (mounting brackets only):
 - a. Resistance to Cracking and Crazing.
 - b. Resistance to Chalking: The finish will not chalk more than a numerical rating of 8.
 - c. Color stability: No change in the color of the finish exceeding 5 (five) CIE Lab units. CIE illuminant D65, measured according to ASTM D2244 Section 6.3.
 - d. Gloss Retention: Finish will retain at least 30% of the initial gloss, measured according to ASTM D523.
 - e. Adhesion: The finish will not peel at a rate inferior to class 4B.
 - f. 25 years warranty from date of Substantial Completion. Pending maintenance of the material and finishes as recommended by the manufacturer.
 - 3. See Manufacturer Warranty Sheet for full product and finish warranty details.
 - 4. Contractor's Labor Warrantees: Three-year labor warranty, starting from **[date of Owner acceptance of completed work]** **[Substantial Performance]**, to cover repair of materials found to be defective as a result of installation errors.

PART 2 - PRODUCTS

2.1 MANUFACTURER

- A. Maibec Inc., 4000 Jean-Marchand Street, Unit 108, Quebec City, Quebec Canada G2C 1Y6.
www.maibec.com

2.2 MATERIAL

- A. Extruded Aluminum: 6063-T5 alloy in accordance with ASTM B221

- B. Aluminum lattice panel (ALP): AA3003H18 alloy in accordance with ASTM B209
- C. Die cast Aluminum: A380 alloy in accordance with ASTM B26/B26M

2.3 ALUMINUM BATTENS **[EDIT AS REQUIRED]**

- A. General: Provide factory battens designed for field installation and mechanically attaching to wall supports, as recommended by manufacturer.
- B. Fabrication Method: Factory assembled battens with mechanically fastened supports.

SPECIFIER NOTE:

Select the desired profile specific to project and delete the other indicated profiles. Where more than one profile or size is selected coordinate with drawings for clarity. Dimensions are nominal, refer to technical data sheet for actual sizes.

- C. Batten Width: 1-inch
 - 1. [1-inch by 2-inch (25mm by 51mm) aluminum batten]
 - 2. [1-inch by 3-inch (25mm by 76mm) aluminum batten]
 - 3. [1-inch by 4-inch (25mm by 102mm) aluminum batten]
 - 4. [1-inch by 5-inch (25mm by 127mm) aluminum batten]
 - 5. [1-inch by 6-inch (25mm by 152mm) aluminum batten]
 - 6. [1-inch by 8-inch (25mm by 203mm) aluminum batten]
 - 7. Batten Length: [16 feet (4.8m)] [12 feet (3.6m)] [8 feet (2.4m)]
 - 8. Minimum Wall thickness: 0.062-inch (1.6mm)
 - 9. Gloss: 15° ±5
- D. Batten Width: 1.5-inch
 - 1. [1.5-inch by 2-inch (38mm by 51mm) aluminum batten]
 - 2. [1.5-inch by 3-inch (38mm by 76mm) aluminum batten]
 - 3. [1.5-inch by 4-inch (38mm by 102mm) aluminum batten]
 - 4. [1.5-inch by 5-inch (38mm by 127mm) aluminum batten]
 - 5. [1.5-inch by 6-inch (38mm by 152mm) aluminum batten]
 - 6. [1.5-inch by 8-inch (38mm by 203mm) aluminum batten]
 - 7. Batten Length: [16 feet (4.8m)] [12 feet (3.6m)] [8 feet (2.4m)]
 - 8. Minimum Wall thickness: 0.062-inch (1.6mm)
 - 9. Gloss: 15° ±5
- E. Batten Width: 2-inch
 - 1. [2-inch by 2-inch (51mm by 51mm) aluminum batten]
 - 2. [2-inch by 3-inch (51mm by 76mm) aluminum batten]
 - 3. [2-inch by 4-inch (51mm by 102mm) aluminum batten]
 - 4. [2-inch by 5-inch (51mm by 127mm) aluminum batten]
 - 5. [2-inch by 6-inch (51mm by 152mm) aluminum batten]
 - 6. [2-inch by 8-inch (51mm by 203mm) aluminum batten]
 - 7. Batten Length: [16 feet (4.8m)] [12 feet (3.6m)] [8 feet (2.4m)]
 - 8. Minimum Wall thickness: 0.125-inch (3,18mm)
 - 9. Gloss: 15° ±5
- F. Acceptable Materials: Maibec digitally printed Architectural aluminum Batten as manufactured by Maibec® Inc.
- G. Substitutions: Not Permitted.
- H. Requests for substitutions will be considered in accordance with the guidelines outlined in Section 01 60 00 "Product requirements".

2.4 ACCESSORIES [EDIT AS REQUIRED]

- A. General: Provide as recommended by batten manufacturer for building configuration.
1. Accessories shall be made from the same material of adjacent batten unless otherwise indicated.

SPECIFIER NOTE:

Select the desired accessory specific to the project and delete the other indicated accessories. Where more than one accessory is selected coordinate with drawings for clarity. Select accordingly.

- B. Diecast Aluminum Accessories: One Piece bracket; Two (2) Pieces per batten ends
1. BC Bracket for:
 - a. [1-inch (25mm) aluminum batten]
 - b. [1.5-inch (38mm) aluminum batten]
 - c. [2-inch (51mm) aluminum batten]
 2. Dimensions (W* x L x H):
 - a. [2-inch] [2.5-inch] [3-inch] * x 1.5-inch x 0.5-inch ([51] [64] [76] x 38 x 12.7mm)
** In accordance with batten width above*
 3. Minimum Wall thickness: 0.10-inch (2.5mm)
 4. Finish: RAL 7022 Umbra Grey matte finish
 5. Gloss: 20° ±5
 6. Complete with color match Stainless Steel screws
- C. Extruded Aluminum Accessories: One Piece bracket
1. CC Bracket for:
 - a. [1-inch (25mm) aluminum batten]
 - b. [1.5-inch (38mm) aluminum batten]
 - c. [2-inch (51mm) aluminum batten]
 2. Dimensions (W* x L x H):
[1.3-inch] [1.8-inch] [2.3-inch] * x 3-inch x 1.2-inch ([32] [44.7] [57.4] * x 76 x 30.5mm)
** In accordance with batten width above*
 3. Metal thickness: 0.125-inch (3mm)
 4. Finish: RAL 7022 Umbra Grey matte finish
 5. Gloss: 20° ±5
 6. Complete with color match Stainless Steel screws
- D. Extruded Aluminum Accessories: Two (2) Pieces bracket
1. SN Bracket for:
 - a. 1-inch (25mm), 1.5-inch (38mm) and 2-inch (51mm) aluminum batten widths
 2. Dimensions (W x L x H): 1-inch x 4-inch x 1-inch (25 x 102 x 25mm)
 3. Metal thickness: 0.10-inch (2.5mm)
 4. Finish: RAL 7022 Umbra Grey matte finish
 5. Gloss: 20° ±5
 6. Complete with color match Stainless Steel screws
- E. Lattice aluminum end caps
1. Shall be made from the same material and matching finish of batten unless otherwise indicated.
 2. Dimensions (W x H): Refer to batten size (section 2.3).
 3. Thickness: 0.16-inch (4mm)
 4. Gloss: 15° ±5
 5. Assembly: Glued to batten
- F. Fasteners: Recommended by manufacturer. Do not use metals that are incompatible with joined materials.
1. Use types and sizes to suit unit installation conditions.
 2. Use Stainless Steel screws or other types best suited to substrate conditions and environmental exposition. Size specified in technical data sheets, unless otherwise indicated.

3. Use Anchors and Inserts of type, size, and material required for loading and installation indicated.
4. Use nonferrous metal or hot dip galvanized anchors and inserts.
5. Use toothed steel or expansion bolt devices for drilled in place anchors.

2.5 FINISHES

- A. Digitally Printed Three-layer Finish
 1. Primer coat: High quality white UV coating applied to aluminum.
 2. Digital printed inkjet coating.
 3. UV Barrier: Protective Clear Coat for UV protection against fading.
 4. Style and Color to match MAIBEC Architectural Aluminum [STYLE and Color reference XXX-XX].
- B. Solid Color Finish (mounting brackets accessories only)
 1. Liquid-coated finish
 2. Color to match Umbra Grey RAL 7022 matte finish.

2.6 FABRICATION

- A. Assemble battens in factory to minimize field splicing and assembly.
- B. Fabricate battens of sizes indicated, with allowances made for fabrication and installation tolerances, adjoining materials' tolerances.
 1. Support System: Detailed on Drawings.
 2. Configuration: Detailed on Drawings.
 3. Include supports, anchorages, and accessories required for complete assembly.
- C. Provide batten supports of type and at spacings indicated, but not more than recommended by manufacturer.

PART 3 - EXECUTION

3.1 EXAMINATION

- A. Examine substrates for compliance with requirements for installation conditions affecting performance of metal batten and related accessories.
 1. Examine framing to verify that structural support members and anchorage have been installed within a reasonable tolerance to perform the recommended installation by batten manufacturer.
- B. Proceed with installation only after unsatisfactory conditions have been corrected.

3.2 PREPARATION

- A. Clean substrates of projections and substances detrimental to application.
- B. Inspect product before installation and verify that there is no shipping damage. Ensure proper handling and storage of all material.
- C. Do not install any damaged or questionable product; repair or replace as required for smooth, consistent, and high-quality finished appearance.

3.3 INSTALLATION

- A. General: Comply with manufacturer's written installation instructions applicable to products and applications indicated unless more stringent requirements apply.
- B. Install aluminum batten in orientation, size, and locations as indicated. Anchor battens and components of the work securely in place, with provisions for thermal and structural movement.
 - 1. Align battens as indicated on Drawings.
 - 2. Install mounting clips, end mounts cap, and internal stiffeners (if applicable).
 - 3. Locate and place battens level, plumb, and at indicated alignment with adjacent work.
 - 4. Maintain equal batten spacing to produce uniform appearance, unless otherwise specified.
 - 5. Provide adequate fastening for calculated wind load.
- C. Repair finishes damaged by cutting and grinding. Restore finishes so no evidence remains of corrective work. Return items that cannot be refinished in the field to the factory, make required alterations, and refinish entire unit or provide new units.

3.4 ADJUSTING AND CLEANING

- A. Remove damaged, improperly installed, or otherwise defective materials and replace with new materials complying with specified requirements.
- B. Periodically clean exposed surfaces of battens that are not protected by temporary covering to remove fingerprints and soil during construction period. Do not let soil accumulate until final cleaning.
- C. Protect battens from damage during construction. Use temporary protective coverings where needed and approved by manufacturer. Remove protective covering at the time of Substantial Completion.
- D. Clean and touch up minor abrasions in finishes with air dried coating that matches color and gloss of, and is compatible with, factory applied finish coating.
- E. Clean finished surfaces according to manufacturer's written instructions and maintain in a clean condition during construction. Before final inspection, clean exposed surfaces with water and a mild soap or detergent not harmful to finishes. Thoroughly rinse surfaces and dry.

END OF SECTION

DISCLAIMER:

This Specification has been written as an aid to the professionally qualified Specifier and Design Professional. The use of this Guide requires the sole professional judgment and expertise of the qualified Specifier and Design Professional to adapt the information to the specific needs for the Building Owner and the Project, to coordinate with their Construction Document Process, and to meet all the applicable building codes, regulations, and laws. MAIBEC INC. EXPRESSLY DISCLAIMS ANY WARRANTY, EXPRESSED OR IMPLIED, INCLUDING THE WARRANTY OF MERCHANTABILITY OR FITNESS FOR THE PARTICULAR PURPOSE OF THIS PRODUCT FOR THE PROJECT.

Warranty

Warranty Registration Form

Maibec Architectural Aluminum Cladding

Printed Finish | Paint Finish

Detail and description of the products used on the construction site

Order(s)	Product	Series	Finish/Colour	Paint/Applicator
-	-	-	-	-
-	-	-	-	-
-	-	-	-	-
-	-	-	-	-

This form warrants to:

Insert the name of the owner of the building here

That Maibec Inc. will comply, for MAE/MAA Series, with the standards set out in Sections 1, 2 and 3, subject to the conditions set out in Section 4 of this warranty (attached) and, for MAP Series, with the standards set out in Sections 1 and 2, subject to the conditions set out in Section 3 of this warranty (attached), for Maibec aluminum products including plank siding, vented planks, architectural battens, panels, assembled panels and accessories.

Name and address of Contractor who perform the work:

Insert here

Project Name:

Insert here

Property Address:

Insert here

Email Address:

Insert here

Phone Number:

Insert here

Installation Completion Date:

Insert here

I have read and accept the conditions of the warranty on the product (Section 1), the warranty on the printed finish (Section 2 - MAE/MAA Series) and the warranty on the painted finish (Section 2 - MAP Series and Section 3 MAE/MAA Series), subject to the terms and conditions of Sections 3 (MAP Series) and 4 (MAE/MAA Series) with respect to the products that have been installed on the project or building identified above.

I acknowledge receipt of the copy of the warranty certificate.

Insert here

Insert here

Owner or Contractor name

Date

Signature

Duly authorized on behalf of Maibec Inc.

Insert here

Insert here

Name and title

Date

Signature

Summary of Warranties – MAE and MAA Series

WARRANTIES APPLICABLE TO THE PRODUCT/SUBSTRATE: (see details in the warranties text)		MAIBEC ALUMINIUM Line Extruded Planks and Battens MAE Series , Assembled Battens and Panels MAA Series				
Warping Warranty		50 years				
Corrosion Warranty		50 years				
TERMS OF THE PRODUCT/SUBSTRATE WARRANTIES DURING THE COVERED PERIOD:						
0 - 3 years	Product/Substrate Warranty:	Defective portions are covered 100% by Maibec.				
	Labor Warranty for replacing defective portions:	Labor cost assumed by Maibec up to a maximum of USD 10/ft² or CAD 13/ft² depending on the project location (United States or Canada).				
4 - 50 years	Product/Substrate Warranty:	Defective portions are covered 100% by Maibec.				
	Labor Warranty for replacing defective portions:	No warranty (labor at the customer's expense).				
WARRANTIES APPLICABLE TO THE FINISH: (see details in the warranties text)		PRINTED FINISH	PAINTED FINISH MAIBEC EXPRESS and MAIBEC Selection*		PAINTED FINISH Other Powder / MAIBEC Application**	PAINTED FINISH Subcontracted
		Maibec Print	Opaque Powder AAMA 2604	Opaque Powder AAMA 2605	Opaque Powder from supplier outside selection	Application performed by subcontractor
Adhesion Warranty		20 years	20 years	25 years	The paint manufacturer's warranty for the paint used will apply.	The warranty of the subcontractor who performed the painting work will apply.
Cracking and Crazing Warranty		20 years	20 years	25 years		
Color Stability Warranty		20 years	15 years	20 years		
Gloss Retention Warranty		20 years	15 years	20 years		
Chalking Warranty		Not applicable	15 years	20 years		
TERMS OF THE FINISH WARRANTIES DURING THE COVERED PERIOD:						
0 - 3 years	Finish Warranty:	← Defective portions are covered 100% by Maibec. →			The warranty of the paint manufacturer for the paint used or of the subcontractor who performed the painting work will apply for its duration and according to its terms and conditions.	
	Labor Warranty for replacing defective portions:	← Labor cost covered by Maibec up to USD 10/ft² or CAD 13/ft² depending on the project location (United States or Canada). →				
4 - 15 years	Finish Warranty:	← Defective portions are covered 100% by Maibec. →				
	Labor Warranty for replacing defective portions:	← No warranty (labor at the customer's expense). →				
16 - 20 years	Finish Warranty:	Defective portions are covered by Maibec at 80% during the 16th year, 60% during the 17th year, 40% during the 18th year, 20% during the 19th year, and 10% during the 20th year.	← For warranties that still apply, defective portions are covered 100% by Maibec. →			
	Labor Warranty for replacing defective portions:	← No warranty (labor at the customer's expense) →				
21 years + (up to 25 years)	Finish Warranty:	Not applicable	Not applicable	For warranties that still apply, defective portions are covered 100% by Maibec.		
	Labor Warranty for replacing defective portions:	Not applicable	Not applicable	No warranty (labor at the customer's expense)		

All warranties are subject to the Terms and Conditions detailed in the MAIBEC Architectural warranty document, which takes precedence over the table above and over any other information communicated in the event of conflict or contradiction.

* The MAIBEC Selection includes colors from selected manufacturers' catalogs for which MAIBEC is a certified applicator.

** For a powder coating from a supplier outside the MAIBEC selection catalogs, MAIBEC undertakes to follow the supplier's application specifications (certified by them).

Summary of Warranties – MAP Series

WARRANTIES APPLICABLE TO THE PRODUCT/SUBSTRATE: (see details in the warranties text)		MAIBEC ALUMINIUM Line Panels MAP Series			
Warping Warranty		10 years			
Corrosion Warranty		10 years			
TERMS OF THE PRODUCT/SUBSTRATE WARRANTIES DURING THE COVERED PERIOD:					
0 - 3 years	Product/Substrate Warranty:	Defective portions are covered 100% by Maibec.			
	Labor Warranty for replacing defective portions:	Labor cost assumed by Maibec up to a maximum of USD 10/ft² or CAD 13/ft² depending on the project location (United States or Canada).			
4 - 10 years	Product/Substrate Warranty:	Defective portions are covered 100% by Maibec.			
	Labor Warranty for replacing defective portions:	No warranty (labor at the customer's expense).			
WARRANTIES APPLICABLE TO THE FINISH: (see details in the warranties text)		PAINTED FINISH MAIBEC EXPRESS and MAIBEC Selection*		PAINTED FINISH Other Powder / MAIBEC Application**	PAINTED FINISH Subcontracted
		Opaque Powder AAMA 2604	Opaque Powder AAMA 2605	Opaque Powder from supplier outside selection	Application performed by subcontractor
Adhesion Warranty		20 years	25 years	The paint manufacturer's warranty for the paint used will apply. (see Appendix)	The warranty of the subcontractor who performed the painting work will apply. (see Appendix)
Cracking and Crazing Warranty		20 years	25 years		
Color Stability Warranty		15 years	20 years		
Gloss Retention Warranty		15 years	20 years		
Chalking Warranty		15 years	20 years		
TERMS OF THE FINISH WARRANTIES DURING THE COVERED PERIOD:					
0 - 3 years	Finish Warranty:	← Defective portions are covered 100% by Maibec. →		The warranty of the paint manufacturer for the paint used or of the subcontractor who performed the painting work will apply for its duration and according to its terms and conditions. (see Appendix)	
	Labor Warranty for replacing defective portions:	← Labor cost covered by Maibec up to USD 10/ft² or CAD 13/ft² depending on the project location (United States or Canada). →			
4 - 15 years	Finish Warranty:	← Defective portions are covered 100% by Maibec. →			
	Labor Warranty for replacing defective portions:	← No warranty (labor at the customer's expense). →			
16 - 20 years	Finish Warranty:	← For warranties that still apply, defective portions are covered 100% by Maibec. →			
	Labor Warranty for replacing defective portions:	← No warranty (labor at the customer's expense) →			
21 years + (up to 25 years)	Finish Warranty:	Not applicable	For warranties that still apply, defective portions are covered 100% by Maibec.		
	Labor Warranty for replacing defective portions:	Not applicable	No warranty (labor at the customer's expense)		

All warranties are subject to the Terms and Conditions detailed in the MAIBEC Architectural warranty document, which takes precedence over the table above and over any other information communicated in the event of conflict or contradiction.

* The MAIBEC Selection includes colors from selected manufacturers' catalogs for which MAIBEC is a certified applicator.

** For a powder coating from a supplier outside the MAIBEC selection catalogs, MAIBEC undertakes to follow the supplier's application specifications (certified by them).

Warranty Registration Form	1
Summary of Warranties – MAE and MAA Series.....	2
Summary of Warranties – MAP Series	3
Limited Warranty	5
DEFINITIONS.....	5
Section 1 - PRODUCT	5
Section 2 - Printed finish	5
Section 3 - PAINTED FINISH (AAMA 2604-13 OR AAMA 2605-13 Powder coating)	6
Section 4 - Warranty terms and conditions	6
Limited Warranty Folded Aluminum Profiles MAP Series	8
DEFINITIONS.....	8
Section 1 - PRODUCT	8
section 2 - finish	8
Section 3 - Warranty terms and conditions	9
Appendices / Manufacturer(s) warranties, applicator(s) – Other(s).....	11

Limited Warranty

Extruded Aluminum Products

MAE and MAA Series



Maibec Architectural Aluminum Cladding

Extruded Aluminum Profiles (MAE Series) - Maibec Aluminum Assembled Products (MAA Series)

Printed Finish | Paint Finish

WARRANTY APPLICABLE IN CANADA TO PRODUCTS SOLD THROUGH MAIBEC INC.

DEFINITIONS

The term «PRODUCT» refers to the extruded aluminum profile and assembled products of extruded profiles and aluminum composite panels with aluminum core. It excludes any finish or material applied to it.

The term «PRINTED FINISH» refers to the primer coat, the high-definition printed coat, and the clear protective coating at section 2.

The term «PAINTED FINISH» refers to the opaque plain layer of paint that meets the FGIA/ AAMA 2604-13 or AAMA 2605-13 standard (MAIBEC EXPRESS and MAIBEC Selection* only), as applicable, and the performance criteria described in Section 3. The term «FINISH» is used to refer collectively to «PRINTED FINISH» and «PAINTED FINISH».

* The MAIBEC Selection includes colors from selected manufacturers' catalogs for which MAIBEC is a certified applicator.

SECTION 1 - PRODUCT

MAIBEC expressly warrants that its aluminum PRODUCTS are free of physical and manufacturing defects.

During the warranty period, when the PRODUCT is installed and maintained according to MAIBEC's instructions, it is guaranteed against the following:

- 1.1. Warping. The PRODUCT is guaranteed to be free from inherent warping. This warranty does not cover warping resulting from external factors, including but not limited to the structure or support to which the product is attached. For the purposes of this warranty, warping is defined as a deformation exceeding 1.6 mm (1/16 in) out of plane per linear foot or 304.8 mm (12 in).
- 1.2. Corrosion. When installed and maintained according to MAIBEC's instructions, the PRODUCT is also warrantied against rust and corrosion.
- 1.3. The "warranty period" for the warranties detailed in section 1 is valid for ten (50) years, commencing on the date shown on the warranty registration form and continuing for as long as the "owner" named above owns the property where the product was originally installed, subject to section 4.2.

1.4. In the event that the PRODUCT has a physical or manufacturing defect::

- 1.4.1. For three (3) years following the installation completion date: MAIBEC will, at its sole discretion, replace, repair, or refund the defective portion of the PRODUCT and reimburse labor costs up to a maximum of US\$10 or Can\$13 per square foot of replaced product, depending on the project location (United States or Canada), to the owner or subsequent purchaser of the building where the PRODUCT is installed, as applicable.
- 1.4.2. From the fourth (4th) year until the fiftieth (50th) year following the installation completion date: MAIBEC will, at its sole discretion, replace, repair, or refund the defective portion of the PRODUCT to the owner or subsequent purchaser of the building where the PRODUCT is installed, as applicable. MAIBEC will not assume any labor costs.

SECTION 2 - PRINTED FINISH

During the warranty period, the PRINTED finish will be warrantied as follows:

- 2.1. Resistance to cracking and crazing. The PRINTED FINISH will be free of any visible cracking or crazing when observed from a distance of 3 m (10 feet) from the metal surface and inspected at a 90-degree angle to the surface.
- 2.2. Color stability. No change in the color of the PRINTED FINISH exceeding 5 (five) CIE Lab units measured according to Section 6.3 of the ASTM D2244 standard. Color change will be measured on the exposed surface after it has been cleaned to remove oil, grease, or other contaminants. The corresponding values will be compared to the values measured on the original batch.
- 2.3. Gloss retention. The PRINTED FINISH will have a gloss retention of at least 50% of the original. Gloss retention will be measured on the exposed finish surface after it has been cleaned to remove oil, grease, or other contaminants. The corresponding values will be compared to the values measured on the original manufactured product.
- 2.4. Adhesion. The PRINTED FINISH, whose adhesion is initially measured on reference samples, will not show any detachment inferior to class 4B as per method "B" of the ASTM D3359 standard.
- 2.5. The "warranty period" for the warranties detailed in section 2 is valid for twenty (20) years, commencing on the date shown on the warranty registration form, and for as long as the "owner" named owns the property where the product was originally installed, subject to section 4.2 and in accordance with the terms described in section 2.6.
- 2.6. In the event of a PRINTED FINISH defect:
 - 2.6.1 For three (3) years following the date of installation: MAIBEC will, at its sole discretion, replace, repair, or refund the defective portion of the PRODUCT and reimburse labor costs up to a maximum of US\$10 or Can\$13 per square foot of replaced product, depending on the project

location (United States or Canada), to the owner or subsequent purchaser of the building where the PRODUCT is installed, as the case may be.

- 2.6.2 For the fourth (4th) to fifteenth (15th) years following the date of installation: MAIBEC will, at its sole discretion, replace, repair, or refund the defective portion of the PRODUCT to the owner or subsequent purchaser of the building where the PRODUCT is installed, as the case may be. MAIBEC will not assume any labor costs.
- 2.6.3 For the sixteenth (16th) to twentieth (20th) years following the date of installation: MAIBEC will, at its sole discretion, replace, repair, or refund the defective portion of the PRODUCT to the owner or subsequent purchaser of the building where the PRODUCT is installed, as the case may be, up to an amount based on the PRODUCT's remaining lifespan (please refer to the table below). MAIBEC will not assume any labor costs..

Years	Covered by Maibec
16	80%
17	60%
18	40%
19	20%
20	10%

SECTION 3 - PAINTED FINISH (AAMA 2604-13 OR AAMA 2605-13 POWDER COATING)

During the warranty period, the PAINTED FINISH will be warrantied as follows:

- 3.1 Resistance to cracking and crazing. This PAINTED FINISH on the building will be free of any visible cracking or crazing when observed from a distance of 3 m (10 feet) from the metal surface and inspected at a 90-degree angle to the surface.
- 3.2 Color stability. No change in the color of the PAINTED FINISH exceeding 5 (five) CIE Lab units measured according to Section 6.3 of the ASTM D2244 standard. Color change will be measured on the exposed surface after it has been cleaned to remove oil, grease, powder, oxide film, or other contaminants. The corresponding values will be compared to the values measured on the original batch.
- 3.3 Color stability. No change in the color of the PAINTED FINISH exceeding 5 (five) CIE Lab units measured according to Section 6.3 of the ASTM D2244 standard. Color change will be measured on the exposed surface after it has been cleaned to remove oil, grease, powder, oxide film, or other contaminants. The corresponding values will be compared to the values measured on the original batch.
- 3.4 Gloss retention. The coated surface will have a gloss retention of at least 30% of the original for the **AAMA 2604-13 powder coating** or at least 50% of the original for the **AAMA 2605-13 powder coating**, measured at 60° in accordance with the ASTM D523 standard. Gloss retention will be measured on the exposed PAINTED FINISH surface after it has been cleaned to remove oil, grease, powder, or other contaminants. The corresponding values will be compared to the values measured on the original manufactured product.
- 3.5 Resistance to chalking. The PAINTED COATED FINISH coat will not chalk in excess of a numerical rating of 8 measured according to method A of the ASTM D4214 standard.

FOR AAMA 2604-13 POWDER COATING

- 3.6 The "warranty period" for the warranties detailed at length in sections 3.1 (cracking and crazing) and 3.2 (adhesion) is valid for twenty (20) years, commencing on the date shown on the warranty registration form and continuing for as long as the "owner" named above owns the property where the product was originally installed, subject to section 4.2 and in accordance with the terms described in section 3.10.
- 3.7 The "warranty period" for the warranties detailed at length in sections 3.3 (color stability), 3.4 (gloss) and 3.5 (chalking) is valid for fifteen (15) years, commencing on the date shown on the warranty registration form and continuing for as long as the "owner" named above owns the property where the product was originally installed, subject to section 4.2 and in accordance with the terms described in section 3.10.

FOR AAMA 2605-13 POWDER COATING

- 3.8 The "warranty period" for the warranties detailed at length in sections 3.1 (cracking and crazing) and 3.2 (adhesion) is valid for twenty-five (25) years, commencing on the date shown on the warranty registration form and continuing for as long as the "owner" named above owns the property where the product was originally installed, subject to section 4.2 and in accordance with the terms described in section 3.10.
- 3.9 The "warranty period" for the warranties detailed at length in sections 3.3 (color stability), 3.4 (gloss) and 3.5 (chalking) is valid for twenty (20) years, commencing on the date shown on the warranty registration form and continuing for as long as the "owner" named above owns the property where the product was originally installed, subject to section 4.2 and in accordance with the terms described in section 3.10.
- 3.10 In the event that the PAINTED FINISH has a physical or manufacturing defect::

3.10.1 For three (3) years following the installation completion date: MAIBEC will, at its sole discretion, replace, repair, or refund the defective portion of the PRODUCT and reimburse labor costs up to a maximum of US\$10 or Can\$13 per square foot of replaced product, depending on the project location (United States or Canada), to the owner or subsequent purchaser of the building where the PRODUCT is installed, as applicable

3.10.2 From the fourth (4th) year until the end of the warranty period (15, 20, or 25 years, depending on the warranty): MAIBEC will, at its sole discretion, replace, repair, or refund the defective portion of the PRODUCT to the owner or subsequent purchaser of the building where the PRODUCT is installed, as applicable. MAIBEC will not assume any labor costs.

SECTION 4 - WARRANTY TERMS AND CONDITIONS

- 4.1 Registration of the warranty is mandatory to give it effect, otherwise it is void. The warranty is only valid upon reception of the duly completed warranty registration form. The warranty must be registered within one hundred eighty (180) days of completion of installation. Warranty registration confirms the date of purchase and helps MAIBEC process claims.
- 4.2 This warranty may be transferred (once) from the original owner. To transfer the warranty, submit written notice within ninety (90) days of when the building changed hands. The notice must include the building address, the name, and mailing address (if different) of the new owner(s), and the date of the transfer.
- 4.3 Proof of purchase of the PRODUCT must be retained, as it is required when submitting any claim under this warranty.
- 4.4 The warranty does not cover damage resulting from abnormal atmospheric conditions exceeding C-1, C-2, C-3 classes as defined in ISO 12944-2, including corrosive, saline or particularly polluted atmospheres, such as, but not limited to, atmospheres contaminated by chemical fumes or sea spray.
- 4.5 The warranty does not cover damage to the coated metal caused by handling, shipping, transportation, workmanship, or installation.

- 4.6 The warranty does not cover damage to the coated metal caused by scratching or abrasion after installation.
- 4.7 The warranty does not cover damage to the coated metal caused by standing water in horizontal installations.
- 4.8 The warranty does not cover damage to the coated metal resulting from improper storage. To prevent damage to the PRODUCT and its FINISH, it must be stored flat and kept dry. A humid environment is contraindicated.
- 4.9 The warranty does not cover damage to the coated metal caused by improper maintenance. It is required that dust, dirt and other deposits on the coated part be cleaned annually using a soft sponge or cloth, water and mild detergent or soap with a pH between 5 and 9. Do not pressure-wash or use harsh detergents or chemicals. Include the following in your maintenance log: date, time, name of the person in charge of maintenance and his/her designation, specific products used, name of the maintenance company and general condition of the FINISH. MAIBEC can request a copy of said maintenance log for the processing of claims under the warranty.
- 4.10 The warranty does not apply to damage caused by natural disasters, falling objects, external forces, explosions, fires, riots, public demonstrations, acts of war, or other similar or different events beyond the control of MAIBEC.
- 4.11 The warranty does not apply to damage caused by exposure to temperatures in excess of sixty (60) degrees Celsius, to acids harmful to the type of finish applied to the siding, or to areas of salt water.
- 4.12 The warranty does not apply to damage caused by the use of tape, putty or sealant, vise marks or attachment points, or work - such as bending, stretching, cutting, sawing, milling or countersinking - performed after the transfer of ownership of the parts from MAIBEC to the customer.
- 4.13 The warranty does not cover damage to the PRODUCT resulting from a problem with the design or structure of the building where the PRODUCT is installed.
- 4.14 The warranty does not cover damage caused by a third party not affiliated with MAIBEC.
- 4.15 The warranty does not cover damage resulting from abnormal use of the PRODUCT or negligent conduct toward it.
- 4.16 Claims must be submitted to MAIBEC in writing within a reasonable timeframe (no more than 90 days) after the problem has been identified and be accompanied by proof of purchase of the PRODUCT. Upon receipt of such notice, MAIBEC must be given a reasonable period to inspect and verify the claim. Authorization from MAIBEC must be obtained before starting any repair or refinishing work.
- 4.17 MAIBEC assumes only limited responsibility for transportation and labor costs required to disassemble defective parts, return them to its facilities and have them reinstalled. The same applies for material costs related to the factory production of defective parts that cannot be recovered for re-covering. For all this specific works, MAIBEC's liability is limited to an amount equal to a maximum of two hundred percent (200%) of the contract value.
- 4.18 MAIBEC shall not be liable for any claim, contractual or otherwise, for any damage, direct or indirect, resulting from a defect of the PRODUCT, including, without limiting the generality of the foregoing, loss of profit, revenue, market, goodwill, business or production, loss of time, enjoyment of life or any other type of claim by the customer or any third party.
- 4.19 The warranty on any repaired or replaced coated metal is valid for the remainder of the original product warranty period. All work will be performed by a company or contractor selected or authorized by MAIBEC. Color variation between repaired or replaced products and original products will not be considered a defect.
- 4.20 This warranty represents the entire agreement between the parties relating to its subject matter and supersedes any prior agreement, verbal or written, between the parties relating to its subject matter. The limited warranties specify MAIBEC's full liability for the products they cover. No person is authorized to make any statements about the warranty on behalf of MAIBEC except as expressly stated above, and such statements will not be binding on MAIBEC, including any declaration made by its representatives, as the case may be.
- 4.21 Except as expressly stated above, MAIBEC makes no warranties of any kind, express or implied, including but not limited to warranties of merchantability or fitness for a particular purpose. Warranties are valid for the duration of the limited warranty, or the shorter period provided for by local law.
- 4.22 NOTHING IN THIS WARRANTY SHALL BE CONSTRUED AS A WARRANTY OF THE QUALITY OF THE INSTALLER'S WORKMANSHIP, OR AS REQUIRING MAIBEC TO BE LIABLE FOR UNSATISFACTORY PERFORMANCE DUE TO FAULTY WORKMANSHIP OR INSTALLATION. THE WARRANTY IS VOID IF MAIBEC'S INSTALLATION INSTRUCTIONS ARE NOT FOLLOWED.
- 4.23 This warranty is governed by the laws in force in the province of Quebec and its interpretation is subject to these same laws. Any dispute between the parties in connection with this warranty must be heard by the courts of the place where the contract was formed, to the exclusion of any other jurisdiction.

This warranty gives you specific legal rights, which can vary from a state/province to another. The provisions of this warranty do not prevent the application of any applicable provincial or state law which, in certain circumstances, may prohibit certain limitations and exclusions provided by these warranties.

MAIBEC SHALL NOT BE LIABLE IN ANY EVENT FOR INCIDENTAL, SPECIAL, MULTIPLE, PUNITIVE, INDIRECT OR CONSEQUENTIAL DAMAGES RESULTING FROM ANY DEFECT IN THE PRODUCT(S) PROVIDED, INCLUDING BUT NOT LIMITED TO DAMAGE TO PROPERTY OR LOSS OF PROFITS.

For more information about the products, please contact Customer Service:

<p>Maibec Inc. 202 – 1984, 5th Street Levis (Quebec) G6W 5M6 Canada</p>	<p>Phone: 418 659-3323 Toll-Free-Number: 1 800 363-1930 info@maibec.com</p>
--	---

Limited Warranty Folded Aluminum Profiles MAP Series



Maibec Architectural Aluminum Cladding

Maibec Aluminum Plate (MAP Series)

Paint Finish

WARRANTY APPLICABLE IN CANADA TO PRODUCTS SOLD THROUGH MAIBEC INC.

DEFINITIONS

The term «product» refers to the Folded Aluminum Profiles. It excludes any finish or material applied to it.

The term «finish» refers to the opaque plain layer of paint that meets the FGIA/ AAMA 2604-13 or AAMA 2605-13 standard (MAIBEC EXPRESS and MAIBEC Selection* only), as applicable, and the performance criteria described in Section 2.

*The MAIBEC Selection includes colors from selected manufacturers' catalogs for which MAIBEC is a certified applicator.

SECTION 1 - PRODUCT

MAIBEC expressly warrants that its aluminum PRODUCTS are free of physical and manufacturing defects.

During the warranty period, when the PRODUCT is installed and maintained according to MAIBEC's instructions, it is guaranteed against the following:

- 1.1 Warping. The PRODUCT itself will remain whole and free of any distortion or deformation that may affect its profile or durability during the warranty period, provided that the product is installed under normal conditions and subjected to normal atmospheric loads and pressure. For the purposes of this warranty, warping is defined as a deformation exceeding 1.6 mm (1/16 in) out of plane per linear foot or 304.8 mm (12 in).
- 1.2 Corrosion. When installed and maintained according to MAIBEC's instructions, the PRODUCT is also warranted against rust and corrosion.
- 1.3 The "warranty period" for the warranties detailed in section 1 is valid for ten (10) years, commencing on the date shown on the warranty registration form and continuing for as long as the "owner" named above owns the property where the product was originally installed, subject to section 3.2.
- 1.4 In the event that the PRODUCT has a physical or manufacturing defect:
 - 1.4.1 For three (3) years following the installation completion date: MAIBEC will, at its sole discretion, replace, repair, or refund the defective portion of the PRODUCT and reimburse labor costs up to a maximum of US\$10 or Can\$13 per square foot of replaced product, depending on the project location (United States or Canada), to the owner or subsequent purchaser of the building where the PRODUCT is installed, as applicable
 - 1.4.2 From the fourth (4th) year until the tenth (10th) year following the installation completion date: MAIBEC will, at its sole discretion, replace, repair, or refund the defective portion of the PRODUCT to the owner or subsequent purchaser of the building where the PRODUCT is installed, as applicable. MAIBEC will not assume any labor costs.

SECTION 2 - FINISH

During the warranty period, the FINISH will be warranted as follows:

- 2.1 Resistance to cracking and splitting. This FINISH on the building will be free of any visible cracking or splitting when observed from a distance of 3 m (10 feet) from the metal surface and inspected at a 90-degree angle to the surface.
- 2.2 Adhesion. The FINISH, with adhesion initially measured on samples according to Section 8.4 of the **AAMA 2604-13** or **AAMA 2605-13** standard, as applicable, will not peel at a rate inferior to class 4B as per Method B of the ASTM D3359 standard.
- 2.3 Color stability. No change in the color of the FINISH exceeding 5 (five) CIE Lab units measured according to Section 6.3 of the ASTM D2244 standard. Color change will be measured on the exposed surface after it has been cleaned to remove oil, grease, powder, oxide film, or other contaminants. The corresponding values will be compared to the values measured on the original batch.
- 2.4 Gloss retention. The coated surface will have a gloss retention of at least 30% of the original for the **AAMA 2604-13 powder coating** or at least 50% of the original for the **FAAMA 2605-13 powder coating**, measured at 60° in accordance with the ASTM D523 standard. Gloss retention will be measured on the exposed FINISH surface after it has been cleaned to remove oil, grease, powder, or other contaminants. The corresponding values will be compared to the values measured on the original manufactured product.
- 2.5 Resistance to chalking. The FINISH coat will not chalk in excess of a numerical rating of 8 measured according to method A of the ASTM D4214 standard.

FOR AAMA 2604-13 POWDER COATING

- 2.6 The "warranty period" for the warranties detailed at length in sections 2.1 (cracking and splitting) and 2.2 (adhesion) is valid for twenty (20) years, commencing on the date shown on the warranty registration form and continuing for as long as the "owner" named above owns the property where the product was originally installed, subject to section 3.2 and in accordance with the terms described in section 2.10.
- 2.7 The "warranty period" for the warranties detailed at length in sections 2.3 (color stability), 2.4 (gloss) and 2.5 (chalking) is valid for fifteen (15) years, commencing on the date shown on the warranty registration form and continuing for as long as the "owner" named above owns the property where the product was originally installed, subject to section 3.2 and in accordance with the terms described in section 2.10.

FOR AAMA 2605-13 POWDER COATING

- 2.8 The "warranty period" for the warranties detailed at length in sections 2.1 (cracking and splitting) and 2.2 (adhesion) is valid for twenty-five (25) years, commencing on the date shown on the warranty registration form and continuing for as long as the "owner" named above owns the property where the product was originally installed, subject to section 3.2 and in accordance with the terms described in section 2.10.
- 2.9 The "warranty period" for the warranties detailed at length in sections 2.3 (color stability), 2.4 (gloss) and 2.5 (chalking) is valid for twenty (20) years, commencing on the date shown on the warranty registration form and continuing for as long as the "owner" named above owns the property where the product was originally installed, subject to section 3.2 and in accordance with the terms described in section 2.10.
- 2.10 In the event that the FINISH has a physical or manufacturing defect:
- 2.10.1 For three (3) years following the installation completion date: MAIBEC will, at its sole discretion, replace, repair, or refund the defective portion of the PRODUCT and reimburse labor costs up to a maximum of US\$10 or Can\$13 per square foot of replaced product, depending on the project location (United States or Canada), to the owner or subsequent purchaser of the building where the PRODUCT is installed, as applicable.
- 2.10.2 From the fourth (4th) year until the end of the warranty period (15, 20, or 25 years, depending on the warranty): MAIBEC will, at its sole discretion, replace, repair, or refund the defective portion of the PRODUCT to the owner or subsequent purchaser of the building where the PRODUCT is installed, as applicable. MAIBEC will not assume any labor costs.

SECTION 3 - WARRANTY TERMS AND CONDITIONS

- 3.1 Registration of the warranty is mandatory to give it effect, otherwise it is void. The warranty is only valid upon reception of the duly completed warranty registration form. The warranty must be registered within one hundred eighty (180) days of completion of installation. Warranty registration confirms the date of purchase and helps MAIBEC process claims.
- 3.2 This warranty may be transferred (once) from the original owner. To transfer the warranty, submit written notice within ninety (90) days of when the building changed hands. The notice must include the building address, the name, and mailing address (if different) of the new owner(s), and the date of the transfer.
- 3.3 Proof of purchase of the PRODUCT must be retained, as it is required when submitting any claim under this warranty.
- 3.4 The warranty does not cover damage resulting from abnormal atmospheric conditions exceeding C-1, C-2, C-3 classes as defined in ISO 12944-2, including corrosive, saline or particularly polluted atmospheres, such as, but not limited to, atmospheres contaminated by chemical fumes or sea spray.
- 3.5 The warranty does not cover damage to the coated metal caused by handling, shipping, transportation, workmanship, or installation.
- 3.6 The warranty does not cover damage to the coated metal caused by scratching or abrasion after installation.
- 3.7 The warranty does not cover damage to the coated metal caused by standing water in horizontal installations.
- 3.8 The warranty does not cover damage to the coated metal resulting from improper storage. To prevent damage to the PRODUCT and its FINISH, it must be stored flat and kept dry. A humid environment is contraindicated.
- 3.9 The warranty does not cover damage to the coated metal caused by improper maintenance. It is required that dust, dirt and other deposits on the coated part be cleaned annually using a soft sponge or cloth, water and mild detergent or soap with a pH between 5 and 9. Do not pressure-wash or use harsh detergents or chemicals. Include the following in your maintenance log: date, time, name of the person in charge of maintenance and his/her designation, specific products used, name of the maintenance company and general condition of the FINISH. MAIBEC can request a copy of said maintenance log for the processing of claims under the warranty.
- 3.10 The warranty does not apply to damage caused by natural disasters, falling objects, external forces, explosions, fires, riots, public demonstrations, acts of war, or other similar or different events beyond the control of MAIBEC.
- 3.11 The warranty does not apply to damage caused by exposure to temperatures in excess of sixty (60) degrees Celsius, to acids harmful to the type of finish applied to the siding, or to areas of salt water.
- 3.12 The warranty does not apply to damage caused by the use of tape, putty or sealant, vise marks or attachment points, or work - such as bending, stretching, cutting, sawing, milling or countersinking - performed after the transfer of ownership of the parts from MAIBEC to the customer.
- 3.13 The warranty does not cover damage to the PRODUCT resulting from a problem with the design or structure of the building where the PRODUCT is installed.
- 3.14 The warranty does not cover damage caused by a third party not affiliated with MAIBEC.
- 3.15 The warranty does not cover damage resulting from abnormal use of the PRODUCT or negligent conduct toward it.
- 3.16 Claims must be submitted to MAIBEC in writing within a reasonable timeframe (no more than 90 days) after the problem has been identified and be accompanied by proof of purchase of the PRODUCT. Upon receipt of such notice, MAIBEC must be given a reasonable period to inspect and verify the claim. Authorization from MAIBEC must be obtained before starting any repair or refinishing work.
- 3.17 MAIBEC assumes only limited responsibility for transportation and labor costs required to disassemble defective parts, return them to its facilities and have them reinstalled. The same applies for material costs related to the factory production of defective parts that cannot be recovered for re-covering. For all these specific works, MAIBEC's liability is limited to an amount equal to a maximum of two hundred percent (200%) of the contract value.
- 3.18 MAIBEC shall not be liable for any claim, contractual or otherwise, for any damage, direct or indirect, resulting from a defect of the PRODUCT, including, without limiting the generality of the foregoing, loss of profit, revenue, market, goodwill, business or production, loss of time, enjoyment of life or any other type of claim by the customer or any third party.
- 3.19 The warranty on any repaired or replaced coated metal is valid for the remainder of the original product warranty period. All work will be performed by a company or contractor selected or authorized by MAIBEC. Color variation between repaired or replaced products and original products will not be considered a defect.
- 3.20 Cette garantie représente l'entente intégrale entre les parties relative à son objet et prévaut sur toute entente antérieure, verbale ou écrite, entre les parties relatives à son objet. Les garanties limitées précisent la responsabilité entière de MAIBEC en ce qui a trait aux produits qu'elles couvrent. Nul n'est autorisé à faire de déclaration concernant la garantie au nom de MAIBEC à l'exception de ce qui est expressément énoncé ci-dessus, et de telles déclarations n'auront pas d'effet obligatoire pour MAIBEC, y incluant toute déclaration émanant de ses représentants, le cas échéant.
- 3.21 This warranty represents the entire agreement between the parties relating to its subject matter and supersedes any prior agreement, verbal or written, between the parties relating to its subject matter. The limited warranties specify MAIBEC's full liability for the products they cover. No person is authorized to make any statements about the warranty on behalf of MAIBEC except as expressly stated above, and such statements will not be binding on MAIBEC, including any declaration made by its representatives, as the case may be.
- 3.22 NOTHING IN THIS WARRANTY SHALL BE CONSTRUED AS A WARRANTY OF THE QUALITY OF THE INSTALLER'S WORKMANSHIP, OR AS REQUIRING MAIBEC TO BE LIABLE FOR UNSATISFACTORY PERFORMANCE DUE TO FAULTY WORKMANSHIP OR INSTALLATION. THE WARRANTY IS VOID IF MAIBEC'S INSTALLATION INSTRUCTIONS ARE NOT FOLLOWED.
- 3.23 This warranty is governed by the laws in force in the province of Quebec and its interpretation is subject to these same laws. Any dispute between the parties in connection with this warranty must be heard by the courts of the place where the contract was formed, to the exclusion of any other jurisdiction.

This warranty gives you specific legal rights, which can vary from a state/province to another. The provisions of this warranty do not prevent the application of any applicable provincial or state law which, in certain circumstances, may prohibit certain limitations and exclusions provided by these warranties.

MAIBEC SHALL NOT BE LIABLE IN ANY EVENT FOR INCIDENTAL, SPECIAL, MULTIPLE, PUNITIVE, INDIRECT OR CONSEQUENTIAL DAMAGES RESULTING FROM ANY DEFECT IN THE PRODUCT(S) PROVIDED, INCLUDING BUT NOT LIMITED TO DAMAGE TO PROPERTY OR LOSS OF PROFITS.

For more information about the products, please contact Customer Service:

Maibec Inc.

202 – 1984, 5th Street

Levis (Quebec)

G6W 5M6 Canada

Phone: 418 659-3323

Toll-Free-Number: 1 800 363-1930

info@maibec.com

Care & Maintenance Guide

Care & Maintenance Guide

Maibec Aluminum Cladding for HD Printed or solid color finishes

Maibec aluminum cladding is engineered for durability and lasting beauty. Proper care is essential to preserve the finish, prevent buildup of contaminants, and ensure long-term performance.

This guide outlines recommended cleaning practices and maintenance intervals based on environmental conditions. Compliance with these guidelines also supports the smooth processing of warranty claims.

MAINTENANCE SCHEDULE

The frequency of cleaning depends on the environment in which the product is installed. Use the table below as a reference:

Environment	Recommended Cleaning Frequency
Aggressive industrial areas	Every 3 months
Pool or chlorinated environments	Every 3 months
Coastal (marine/salt exposure)	Every 3 months
Tropical or high-humidity zones	Every 6 months
All other non-aggressive areas	Annually

Important : Periodic cleaning must be recorded and demonstrable to ensure smooth warranty processing, if required.

CLEANING INSTRUCTIONS

Tools and Materials

- Garden hose
- Soft-bristled brush or microfiber cloth
- Bucket with warm water
- Approved cleaning solution such as **Simple Green Oxy** or other mild, neutral pH detergent

Cleaning Procedure

1. **Rinse** the cladding using a garden hose to remove loose dirt and debris.
2. **Mix** the approved cleaner with water as directed by the manufacturer.
3. **Gently scrub** the surface with a soft brush or cloth, working from top to bottom.
4. **Rinse thoroughly** with clean water to remove all residues.
5. Let the surface **air dry** naturally.

Pressure washers are not recommended. Excessive pressure can damage the finish or force water into panel joints, compromising performance and warranty.

DEALING WITH STAINS OR BUILD-UP

For areas with stubborn grime, soot, or organic residue:

- Use **Simple Green Oxy** or another approved cleaner designed for aluminum siding and neutral pH balance.
- **Do not** use abrasive tools, bleach, strong solvents, or cleaners with high acidity or alkalinity.
- Always test any cleaning product on a discreet area first.

SEASONAL CONSIDERATIONS

- Rinse off salt or de-icing residue promptly during winter months.
- Keep gutters and overhangs free of debris to prevent staining or overflow.

WARRANTY REMINDER

Documenting maintenance activities is essential for warranty support:

- Maintain a cleaning log with dates, products used, and photos if possible.
- Failure to follow recommended care guidelines may void warranty coverage.

Care & Maintenance Guide (cont'd)

MAINTENANCE RECORD

[illegible]